

ASX ANNOUNCEMENT

07 June 2012

COOLGARDIE DRILLING PROGRAM IDENTIFIES NEAR SURFACE TARGET BETWEEN HISTORIC MINES

- *Drilling between historic Lindsays and Bayleys mines delivers high-grade intercepts*

Focus Minerals Ltd. (ASX: FML), a leading Australian gold producer and explorer, is pleased to announce encouraging exploration results from the latest round of drilling at its Coolgardie operations.

A shallow RC drilling program focused on an identified trend (Figure 1) which runs parallel to and southwest of the main Prices panel (part of the historical Bayleys underground workings) and immediately east of the historical Lindsays mine.

The drilling has delivered a series of high-grade results (Table 1 and Figure 2) over a 600m strike confirming there is more mineralisation to be found within the Lindsays - Bayleys area, with the mineralisation remaining open along strike and at depth. Results include:

- **6.0m @ 3.8g/t including 1.0m @ 12.6g/t (from 13m)**
- **8.0m @ 10.2g/t including 2.0m @ 30.5g/t (from 24m); and**
- **21m @ 1.3g/t including 3.0m @ 2.2g/t and 1.0m @ 12.4g/t (from 28m)**

The Bayleys mine is the site where gold was first discovered in Coolgardie in 1892 by Arthur Bayley and William Ford. Historical mining underground at Bayleys produced 558,000t @ 16.1g/t for approximately 289,000oz of gold. In the 1990's further mining underground at Bayleys, in conjunction with Kings Cross (immediately south of Bayleys) produced 444,000t @ 6.3g/t.

"Numerous studies over the years have pointed to the potential of the Lindsays - Bayleys area, with such strong intersections only 200m from the original discovery of gold in Coolgardie in 1892, it yet again demonstrates the fantastic endowment in the area and how much potential remains to be unlocked within the Coolgardie area," said Focus Minerals Chief Executive Campbell Baird.

The drilling program (all holes drilled to a total depth of only 54m) followed a recent re-assessment of historical drilling in the Lindsays - Bayleys area which identified a number of anomalous results in some RAB and RC drilling that had been targeting an area parallel to the Prices panel. This indicated a possible parallel structure immediately southwest of the old underground workings.

The mineralisation that has been intersected is associated with the sheared basalt – ultramafic contact, and intermediate and felsic dykes. Quartz veins and sulphides are common within the logged alteration zones, especially within the intermediate and felsic dykes. This is the style of mineralisation as mined at the Bayleys mine.

The Lindsays – Bayleys area (a 2km x 2km zone on the eastern edge of the township of Coolgardie, and 2km from the Three Mile Hill processing plant) contains over 450,000 ounces of Mineral Resources and has been an area of technical focus for the company over the past two years.

A number of target holes have already been planned for future follow-up.

Campbell Baird
Chief Executive Officer
Focus Minerals Ltd
Ph: +61 8 9215 7888

Neil Le Febvre
Investor Relations
Focus Minerals Ltd
Ph: +61 8 9215 7888

Michael Mullane
Media Relations
Cannings Corporate
Ph: +61 2 8284 9990

Figure 1: Drill hole collar locations and cross sections for the Bayleys drilling. Location of cross sections shown on plan.

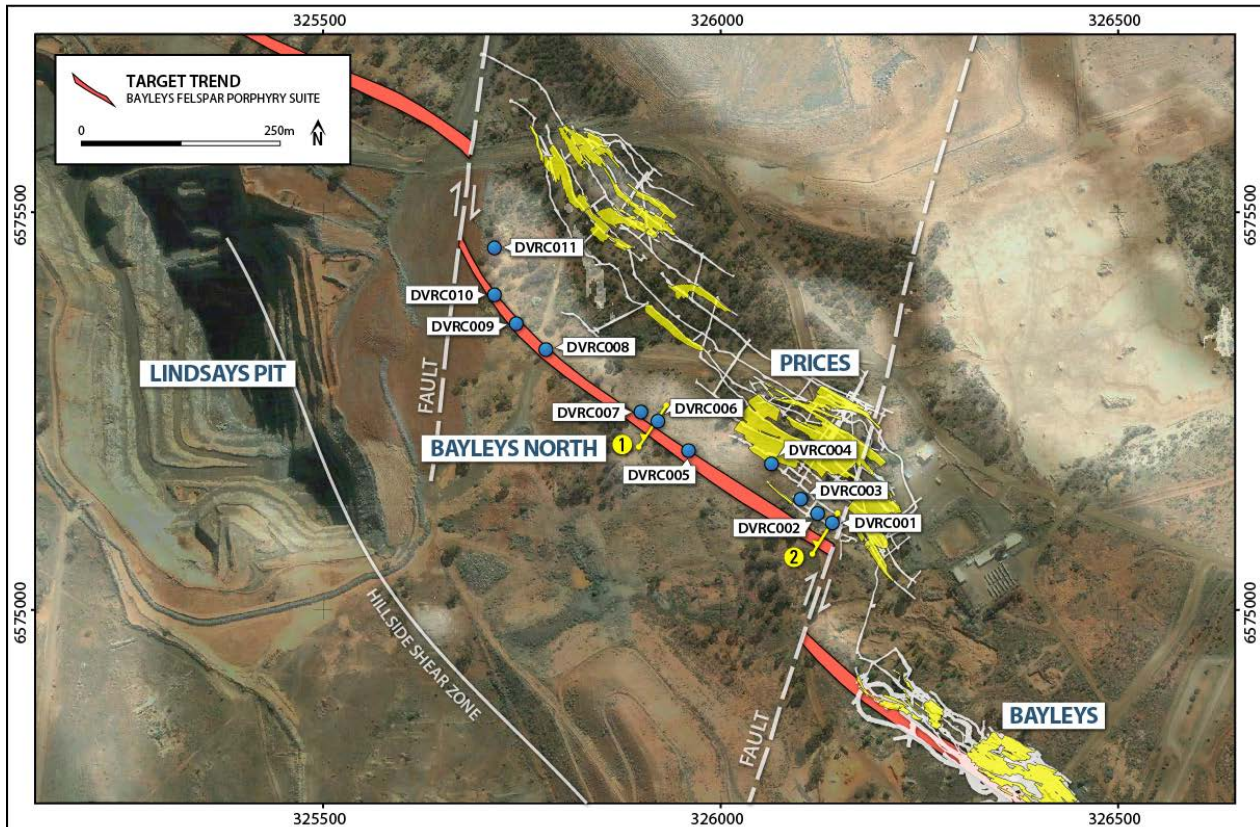
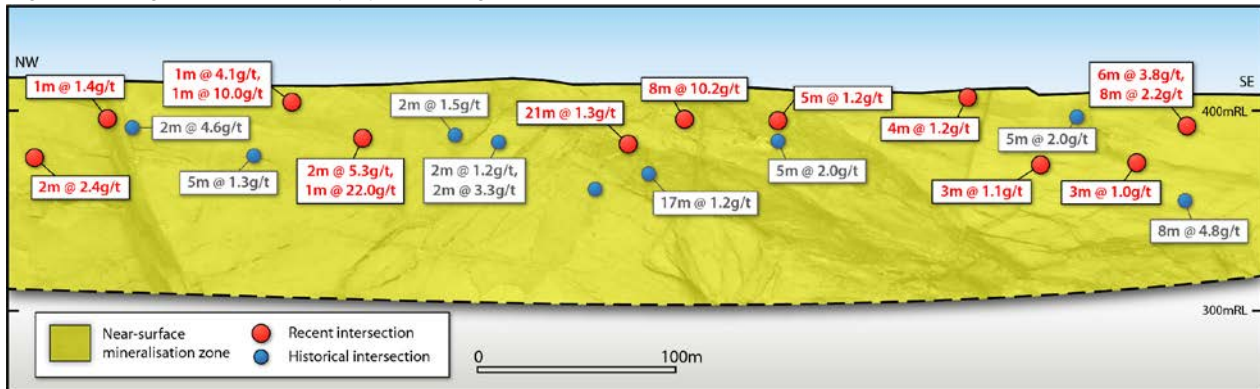


Figure 2: Long Section from Bayleys showing the recent drill intersections



COMPETENT PERSON'S STATEMENT: The information in this report that relates to Exploration Results and Minerals Resources across the Coolgardie region is based on information compiled by Mr Dean Goodwin who is a member of the Australian Institute of Geoscientists. Mr Goodwin is employed by Focus Minerals and has sufficient experience that is relevant to the style of mineralisation and type of deposit under consideration and to the activity which he is undertaking to qualify as a Competent Person as defined in the 2004 Edition of the "Australasian Code for Reporting of Exploration Results, Mineral Resources and Ore Reserves". Mr Goodwin consents to the inclusion in the report of the matters based on the information in the form and content in which it appears.

About Focus Minerals: Focus Minerals is a leading Australian gold producer operating two significant production centres in Western Australia's Eastern Goldfields. The company is the largest landholder in the Coolgardie Gold Belt, 35km west of 'Super Pit' in Kalgoorlie, where it operates 3 mines: The Tindals Underground; Tindals Open Pits; and The Mount underground. Gold is processed at Focus' 1.2Mtpa processing plant, Three Mile Hill, which is adjacent to the town of Coolgardie. Focus also operates, through its 81.57% majority shareholding in Crescent Gold, the Laverton Gold Project, located 250km northeast of Kalgoorlie in Western Australia. Laverton comprises a significant portfolio of large scale open pit mines, with ore being processed under an OPA at the nearby Barrick Granny Smith mill.

Note for Drill Results Table below: All drill holes are sampled to 1m intervals. Assay method is 40 gram fire assay. All mineralised intersections are quoted as down-hole lengths with uncut gold values. The intersections are approximately 70% of true thickness. All gold grades are reported with a nominal cut-off grade of 1g/t Au.

Table 1: Assay Results from Drilling at Bayleys.

Hole Number	Northing	Easting	RL	Azimuth	Dip	Total Depth (m)	From (m)	To (m)	Down Hole Interval (m)	Grade g/t (Au)
DVRC001	6575109	326142	407	215	-60	54	13.00	19.00	6.00	3.75
								includes	1.00	12.60
							31.00	39.00	8.00	2.19
								includes	1.00	7.17
DVRC002	6575121	326123	408	210	-60	54	27.00	28.00	1.00	1.36
							44.00	47.00	3.00	1.01
DVRC003	6575139	326101	407	191	-60	54	28.00	29.00	1.00	1.01
							39.00	40.00	1.00	1.12
DVRC004	6575182	326063	410	230	-60	54	0.00	4.00	4.00	1.21
DVRC005	6575203	325960	412	216	-60	54	21.00	26.00	5.00	1.22
DVRC006	6575236	325921	411	216	-60	54	24.00	32.00	8.00	10.16
								includes	2.00	30.50
DVRC007	6575248	325900	411	216	-60	54	28.00	49.00	21.00	1.27
								includes	3.00	2.16
								includes	1.00	12.40
DVRC008	6575317	325789	412	220	-60	54	17.00	19.00	2.00	5.25
							29.00	30.00	1.00	22.00
DVRC009	6575346	325752	413	220	-55	54	6.00	7.00	1.00	4.08
							17.00	18.00	1.00	9.97
DVRC010	6575397	325716	414	266	-55	54	34.00	35.00	1.00	1.39
DVRC011	6575454	325715	414	269	-55	54	0.00	1.00	1.00	2.42
							50.00	52.00	2.00	2.35