

High-grade gold outlined over 200m strike length at Treasure Island

*Latest results provide more evidence of
potential for substantial outcropping resource*

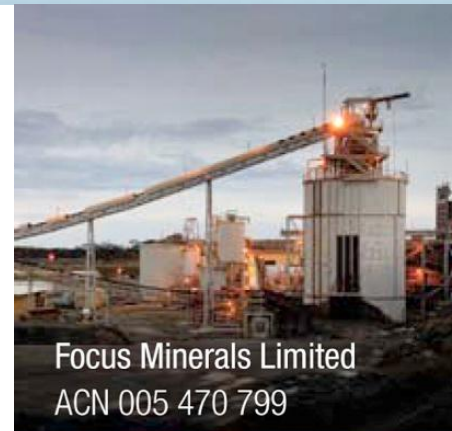
Highlights

- Rock chip sampling returns more high grade gold results including 58.9g/t, 48.4g/t, 41.3g/t and 39.8g/t
- Results stem from sampling conducted at regular intervals over 200m strike length of the eastern quartz vein array
- Numerous high-grade samples, up to 33g/t, were also collected from the quartz vein array at the southern edge of the island over 140m of strike
- Significant evidence of fine visible gold disseminated throughout samples
- Drilling program to follow-up sampling results scheduled for early in new year

Focus Minerals (ASX: **FML**) is pleased to announce that it has outlined high-grade gold over a 200m strike length at its Treasure Island project in WA's Eastern goldfields.

This round of sampling followed up results from the first round, which included 45.7g/t, 38.4g/t, 22.8g/t, 16.4g/t, and 9.4g/t from both the eastern and southern zones (see ASX release dated November 1, 2010).

Treasure Island is part of the Lake Cowan Project, 35km south-south east along strike from the major gold camp of Kambalda-St Ives.



Focus Minerals Limited
ACN 005 470 799

Australian Securities Exchange
Code: FML

Frankfurt Stock Exchange
Code: FZA

Board of Directors

Mr Donald Taig
Executive Chairman

Mr Chris Hendricks
Non-Executive Director

Mr Phil Lockyer
Non-Executive Director

Senior Management

Mr Campbell Baird
Chief Executive Officer

Mr Peter Williams
Chief Operating Officer

Mr Jon Grygorcewicz
Company Secretary

Mr Brad Valiukas
Chief Mining Engineer

Dr Garry Adams
Exploration Manager

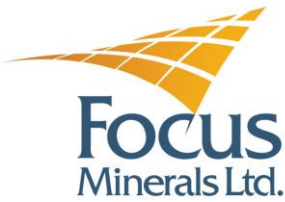
Mr Chuck McCormick
Business Development Manager

Share Registry

Computershare Investor Services Pty Ltd

Investor Enquiries

1300 557 010



Eastern Zone

Detailed systematic sampling taken from the quartz vein array on the eastern edge of the island have returned grades including 58.9g/t, 48.4g/t, 41.3g/t and 17.9g/t (See Figures 1 and 2 and Table 1).

The samples reveal visible gold in quartz collected at regular intervals along the 200m strike length and over a total vein array width of 30m.

In this round of sampling of the eastern vein array, at least two separate quartz veins ranging in thickness from 0.5-4m were sampled along a strike length of just over 200m.

Both veins contain visible gold as pinheads and fine disseminations associated with oxidised sulphides. Oxidised sulphides occur on both the footwall and hangingwall contacts of the veins but also occur as disseminations throughout the quartz.

Southern Zone

High-grade gold samples containing fine visible gold and grading up to 33g/t have also been returned from a second round of rock chip sampling of the quartz vein array at the southern end of the Island along a similar 140m of strike (see Figure 3).

Detailed systematic sampling of the southern quartz vein array returned results including 33.3g/t, 18.0g/t, 15.25g/t, 14.8g/t, 13.2g/t and 12.0g/t from three separate north-south striking quartz veins that strike to the south under Lake Cowan (see Figure 1 & 3 and Table 1).

Samples were taken at regular intervals along the strike of each vein. The veins are consistently 0.5-1.0m thick and contain fine visible gold associated with oxidised sulphides. The southern vein array strikes about 100m, with each vein striking for about 50-70m before going under the lake surface.

Focus Chief Executive Campbell Baird said the latest results were more strong evidence that Treasure Island could host a significant outcropping high-grade gold resource.

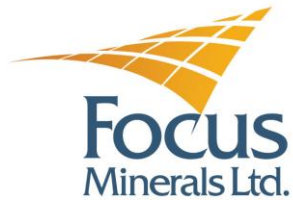
He said the results of an extensive aeromagnetic survey conducted over the island and surrounding lake were imminent, enabling Focus to combine the findings with the sampling results to build a clearer picture of the exploration potential. This would also identify further targets for drilling.

"These results are quite spectacular, particularly when it is remembered that sampling grades in the order of 5 to 10gpt are usually more than enough to generate substantial interest," Mr Baird said. "And while it is early days in this exploration program, we are extremely excited about the potential at Treasure Island and look forward to drilling these targets in the new year."

ENDS

Paul Armstrong/Nicholas Read
Read Corporate
Telephone: (+61-8) 9388-1474

Campbell Baird, CEO
Focus Minerals Ltd
Telephone: (+61-8) 9215-7888
Web: www.focusminerals.com.au



The information that relates to exploration targets refers to targets that are conceptual in nature, where there has been insufficient exploration to define a Mineral Resource and it is uncertain if further exploration will result in the determination of a Mineral Resource.

COMPETENT PERSON'S STATEMENT

The information in this report that relates to Exploration Results and Minerals Resources is based on information compiled by Dr Garry Adams who is a member of the Australasian Institute of Mining and Metallurgy. Dr Adams is a full time employee of Focus Minerals and has sufficient experience that is relevant to the style of mineralisation and type of deposit under consideration and to the activity which he is undertaking to qualify as a Competent Person as defined in the 2004 Edition of the "Australasian Code for Reporting of Exploration Results, Mineral Resources and Ore Reserves". Dr Adams consents to the inclusion in the report of the matters based on the information in the form and content in which it appears.

BACKGROUND INFORMATION – FOCUS MINERALS LTD

Focus Minerals Ltd (ASX: **FML**) is an Australian-based exploration and development group whose focus is to become a significant gold and nickel producer in the Coolgardie-Kalgoorlie-Widgiemooltha region of Western Australia.

Focus Minerals is the largest landholder in the Coolgardie Gold Belt located in Western Australia, 560km east of Perth and 35km west of the 'Super Pit' in Kalgoorlie-Boulder. More than 2.6 million ounces of gold has been produced from the Coolgardie gold belt alone since 1892. Focus holds the mineral rights to more than 305 km of tenements including an extensive inventory of Measured, Indicated and Inferred gold resources as well as the 1.2mtpa Three Mile Hill processing plant.

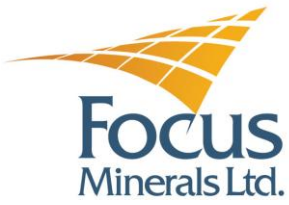


Figure 1 – Plan view of Treasure Island showing the rock chip samples location areas.

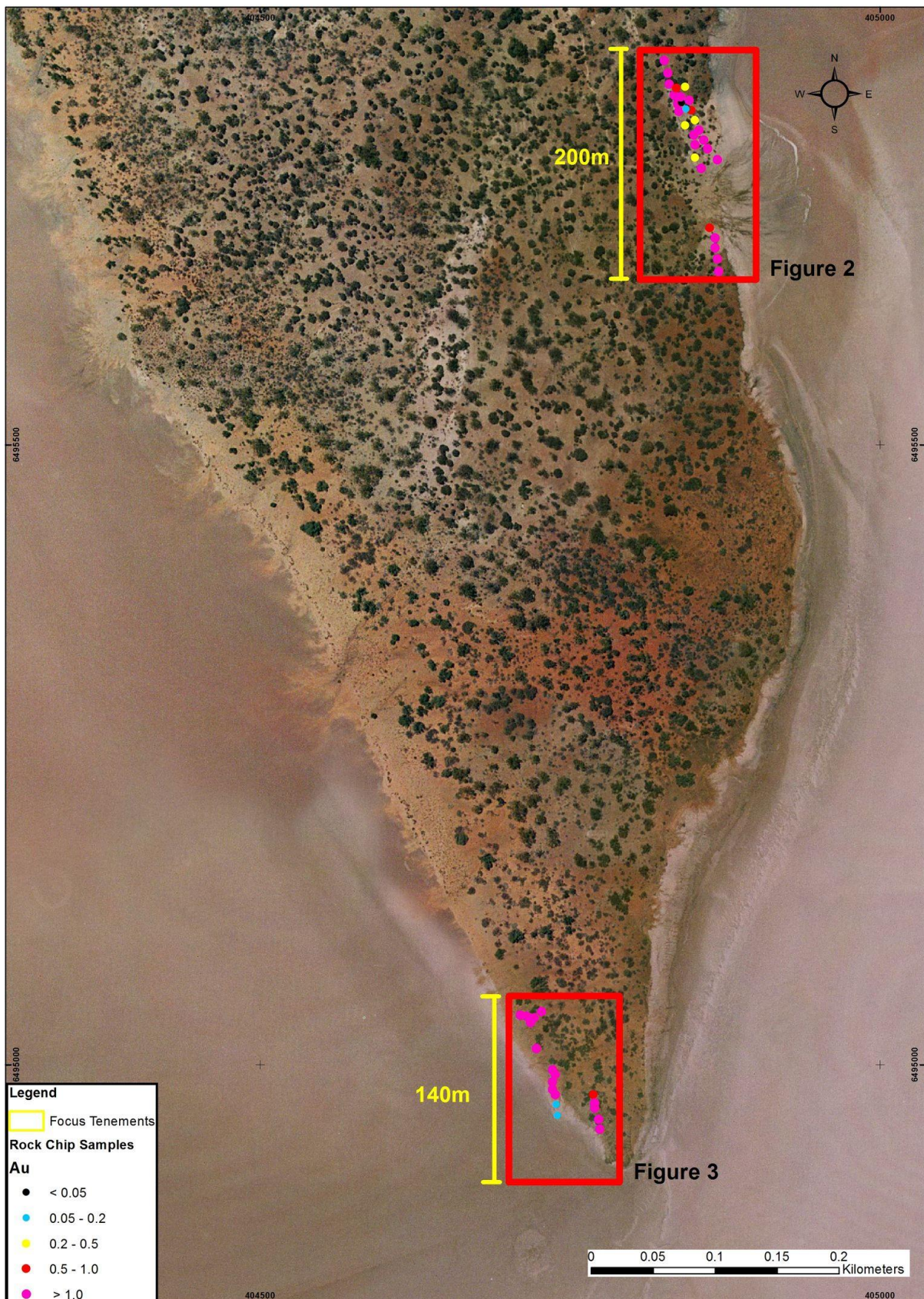
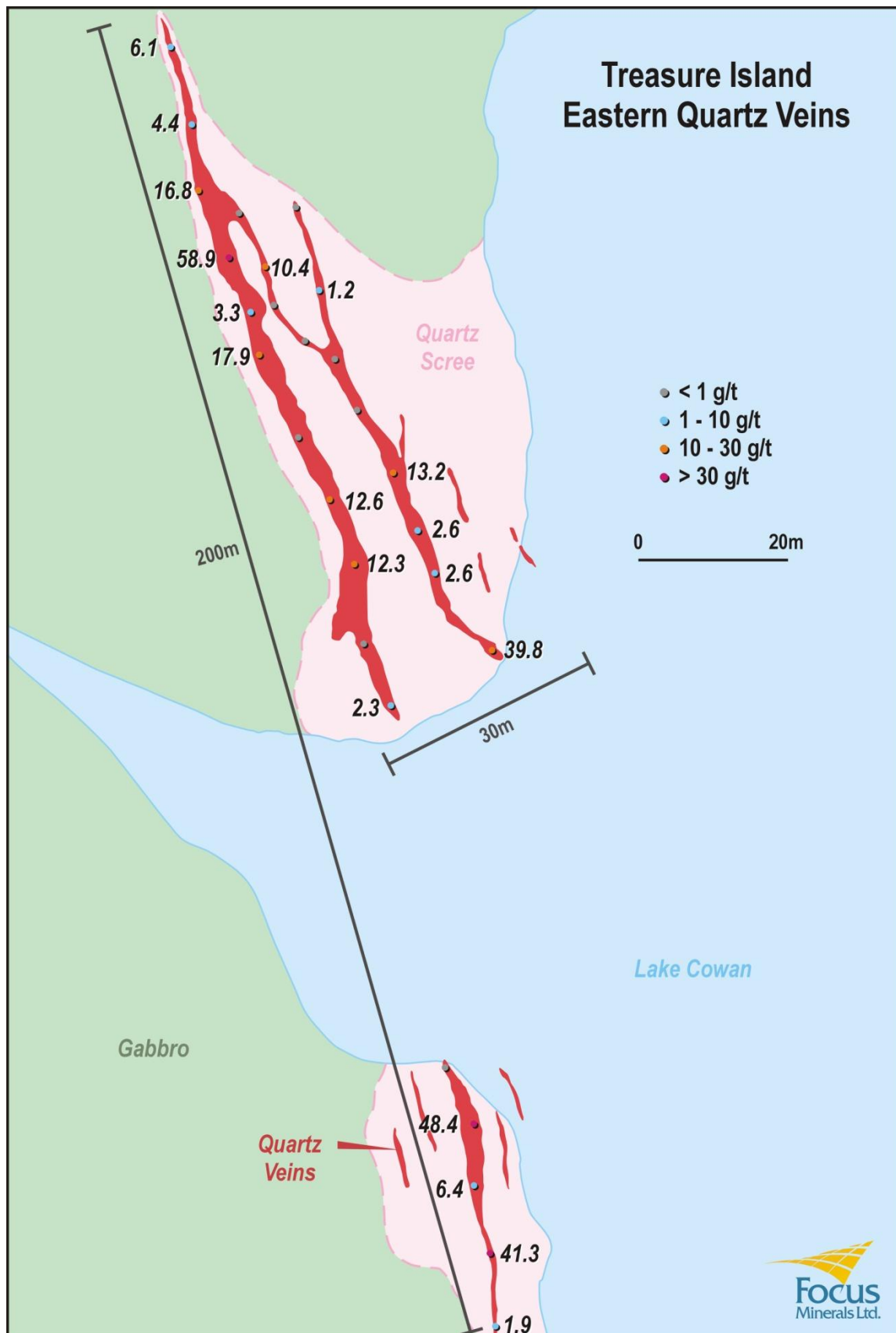


Figure 2 – Sketch of the eastern vein array showing the rock chip grades.



Legend

Focus Tenements

Rock Chip Samples

Au

- < 0.05
- 0.05 - 0.2
- 0.2 - 0.5
- 0.5 - 1.0
- > 1.0

0 0.01 0.02 0.03 0.04 Kilometers

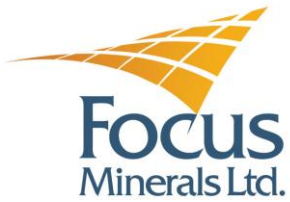
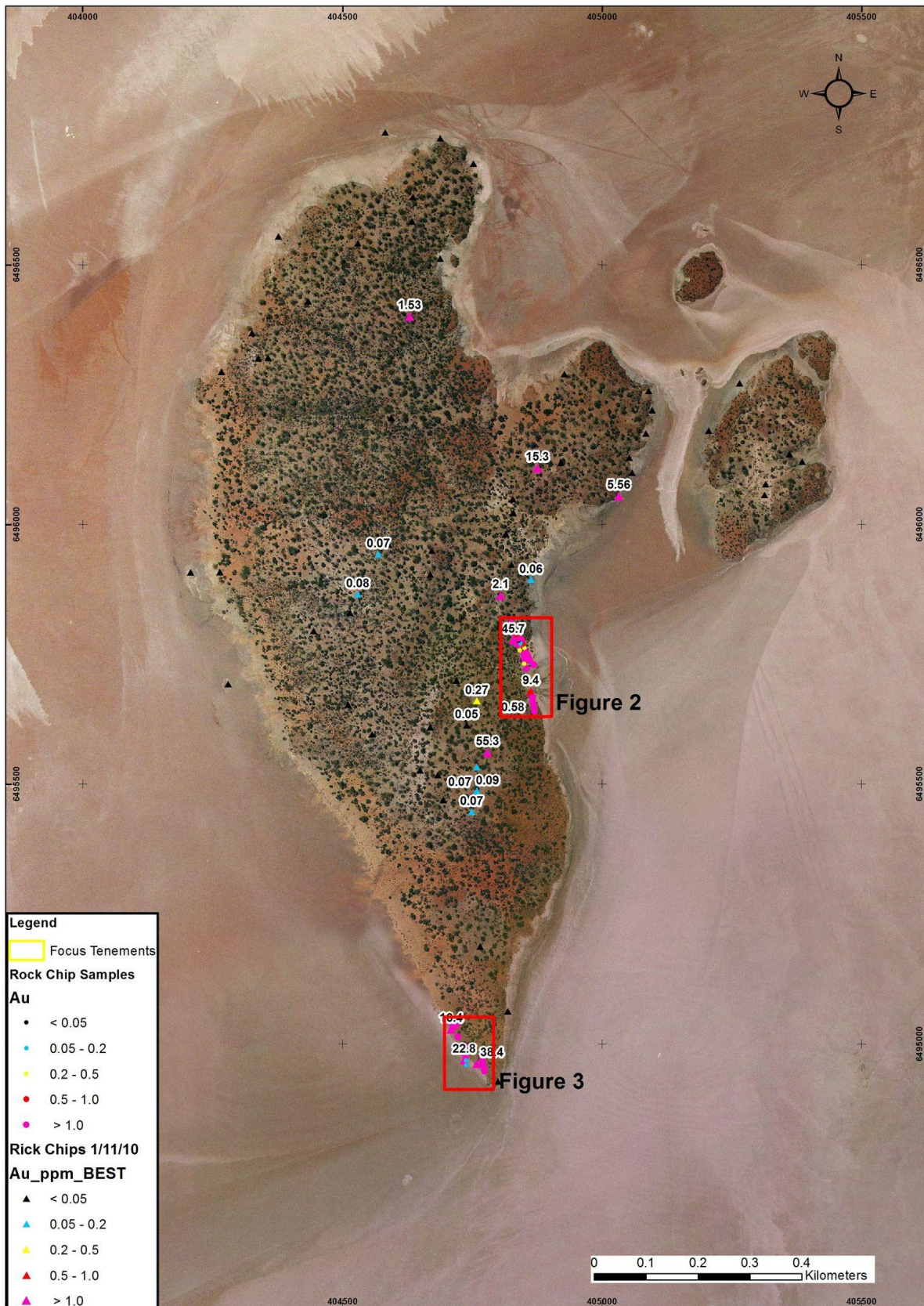


Figure 4 – Plan view of Treasure Island showing the rock chip grades from the results release previously to the ASX (see ASX release on 1/11/10) and the locations of the rock chip sampling in this release.



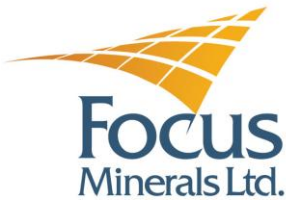


Table 1 – Significant rock chip results from recent detailed sampling at Treasure Island (above 1.0g/t)

Sample	Northing	Easting	Au g/t	Description
EX022081	6495810	404826	6.11	quartz vein fe ox
EX022082	6495800	404829	4.38	quartz vein fe ox
EX022083	6495791	404830	16.75	quartz vein fe ox
EX022084	6495782	404834	58.90	quartz vein fe ox
EX022085	6495775	404837	3.33	quartz vein fe ox
EX022086	6495769	404838	17.85	quartz vein fe ox
EX022088	6495750	404850	12.55	quartz vein fe ox
EX022089	6495742	404851	12.25	quartz vein fe ox
EX022091	6495723	404856	2.34	quartz vein fe ox
EX022093	6495667	404867	48.40	quartz vein fe ox
EX022094	6495659	404867	6.36	quartz vein fe ox
EX022095	6495650	404869	41.30	quartz vein fe ox
EX022096	6495640	404870	1.91	quartz vein fe ox
EX022097	6495730	404869	39.80	quartz vein fe ox
EX022098	6495739	404861	2.60	quartz vein fe ox
EX022099	6495746	404858	2.63	quartz vein fe ox
EX022100	6495754	404854	13.15	quartz vein fe ox
EX022103	6495778	404846	1.22	quartz vein fe ox
EX022107	6495781	404839	10.40	quartz vein fe ox
EX022109	6495040	404710	3.11	quartz vein fe ox
EX022110	6495039	404715	3.20	quartz vein fe ox
EX022111	6495034	404718	3.89	quartz vein fe ox
EX022112	6495038	404721	10.20	quartz vein fe ox
EX022113	6495043	404727	1.35	quartz vein fe ox
EX022114	6495013	404723	14.75	quartz vein fe ox
EX022115	6494996	404736	13.20	quartz vein fe ox
EX022116	6494992	404738	33.30	quartz vein fe ox
EX022117	6494986	404736	15.25	quartz vein fe ox
EX022118	6494980	404736	6.96	quartz vein fe ox
EX022119	6494976	404738	1.88	quartz vein fe ox
EX022123	6494969	404770	11.95	quartz vein fe ox
EX022124	6494965	404770	6.81	quartz vein fe ox
EX022125	6494956	404773	18.00	quartz vein fe ox
EX022126	6494948	404774	6.89	quartz vein fe ox